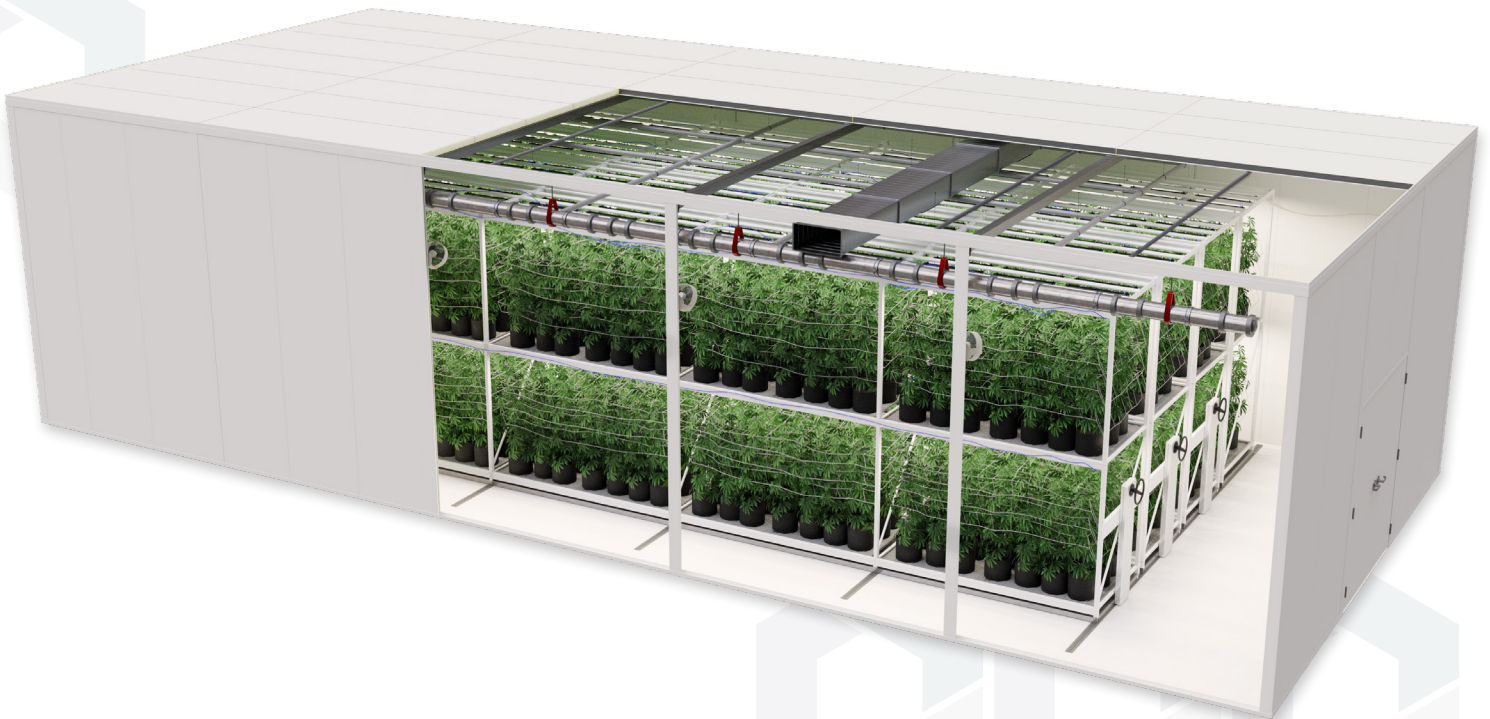


Starrco Modular Grow Room Quote Checklist

Everything You Need to Start Your
Modular Grow Room Quote



Everything You Need to Start Your Modular Grow Room Quote

Planning to install a new grow room or cultivation facility? The Starrco team would be happy to provide you with a fast, free quote for your project. To create an accurate proposal, here's what our team will need to know from you.



Please note that not every grow room project will need every item outlined in this guide. If you see something that is unnecessary for your grow room, feel free to disregard, but remember that ***the more information you give us, the more accurate your quote will be.***



QUOTE CHECKLIST

☐ ROOM DIMENSIONS

What are the dimensions for your modular grow room(s)? Provide width, length, and height. Be sure to include ceiling height and the maximum allowed overall height of the host structure if any obstructions are present. The desired final ceiling height dimension is critical. **Also, will each room be self-supporting, or do you intend to utilize the host structure to support the ceiling of the modular walls?**

☐ ROOF DECK LOAD CAPACITY

What kind of ceiling does your modular grow room require?

- ☐ Do you plan to utilize your existing host structure as your ceiling?
- ☐ Will you require a cleanroom-type finished ceiling or a panelized ceiling?
- ☐ Will you need to be able to walk on top of the modular structure to perform routine maintenance or utilize that space for storage?
 - ☐ If storage space is required, then what do you intend to store or do you have a specific load requirement in mind (50-psf, 80-psf, 125-psf)?

☐ **ROOM CONFIGURATION**

To get an accurate quote for your modular grow room, it would be helpful for you to provide a sketch of your desired room configuration. Your sketch should include:

- ☐ All intersecting walls
- ☐ Any existing interfacing walls
- ☐ Room layout and designations
- ☐ Door types, sizes, and locations
- ☐ Door swings and direction of door swings
- ☐ Window locations (if any)
- ☐ Machinery or equipment that will need to be attached to the walls (if any)

☐ **LIGHTING**

In a modular grow room, standard vision-type LED lighting is usually less of a priority and sometimes unnecessary due to the need for separate grow lights. Please let us know whether or not your modular grow room will require overhead vision lights. If it does, please let us know how many fixtures.

Generally, grow lights are suspended from overhead. If you need to suspend any lights from the modular grow room ceiling, please be sure to tell us how many lights you plan on suspending and roughly how much they weigh.

☐ **EQUIPMENT CUTOUTS**

Does your modular grow room require special wall or ceiling cutouts to accommodate equipment? This equipment could include things like:

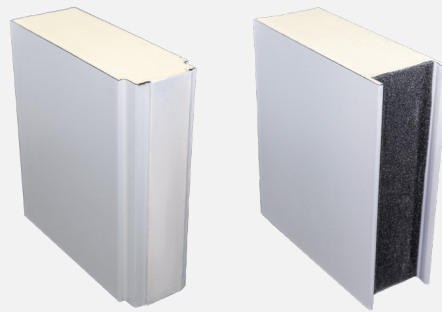
- ☐ Temperature controls
- ☐ Humidifiers and dehumidifiers
- ☐ CO2 systems
- ☐ Aeroponics or hydroponics systems
- ☐ Any other piece of machinery or equipment

☐ MODULAR WALL PANEL MATERIAL

Selecting the right wall panel composition is critical to the performance of your modular grow room. Cannabis and vegetation production facilities require wall panels that are insulated, can withstand regular cleanings with mild chemicals, are resistant to moisture, and meet food-grade compliance. Starrco offers three main wall panel compositions:

☐ High Performance (HP)

- FM Approved (Class 1 Fire Rating)*
- Polyisocyanurate core
- R-21 insulation
- 3" panel thickness
- 24-gauge steel polyester painted finish



☐ Clean Room (CR)

- Class-1 fire rating
- EPS foam core
- R-13 insulation
- 3" panel thickness
- Aluminum baked enamel finish



☐ Deluxe Panel

- ASTM E-2768-2011 (Class A Fire Rating)
- Moisture-resistant gypsum
- EPS foam core
- R-13 insulation
- 3" panel thickness
- Available panel facing options:
HDPE, FRP, painted steel, or aluminum



Choose the option that best suits your application, or let us know that you'd like to get an expert's opinion first.

* Starrco-HP utilizes the Isocindu Isobox-Isopiano wall panel

☐ **MODULAR WALL SYSTEM WORK PERMITS & INSTALLATION**

- ☐ Do you have a license to grow?
- ☐ If your municipality requires permits for these spaces, who is responsible for securing them?
- ☐ Who is installing your modular wall system? Your team, a Starrco distributor, or a third party?
 - ☐ Will the installation crew have access to a forklift?
 - ☐ During installation, will you allow trash disposal in your dumpster?

☐ **TIMELINE**

Have an idea of when you need your wall system installed. Modular wall systems ship and are installed quickly, but to deliver on time it's important that your supplier understands your timeline and any related milestones.

☐ **LOCATION**

Which zip code are you shipping to?

We need this information to estimate freight costs.

Start Your Modular Grow Room Project With Starrco

With all of this information in hand, our team can quickly put together a proposal that reflects your application and your unique requirements for your new modular grow room. We're looking forward to working with you!



Feel free to use the graph paper below to sketch your modular grow room project!

This image shows a full page of blank graph paper. The grid consists of small, uniform squares formed by thin, light gray lines. There are no margins, text, or other markings on the page.