
Starrco Cleanroom Checklist

Everything You Need to Start Your Modular Cleanroom
or Cleanroom Wall Systems Quote



Everything You Need to Start Your Cleanroom Quote

Planning for a new cleanroom or controlled environment? The Starrco team would be happy to provide you with a fast, free quote for your project. To create an accurate proposal, here's what we'll need to know from you.



Please note that not every cleanroom project will need every item outlined in this guide. If you see something that is unnecessary for your cleanroom, feel free to disregard, but remember that ***the more information you give us, the more accurate your quote will be.***

QUOTE CHECKLIST

ROOM DIMENSIONS

What are the dimensions for your cleanroom? Width x length x height, as well as ceiling height and maximum allowed overall height if obstructions are present. The desired finished ceiling height dimension is critical.

A typical installation will require a minimum of 2ft. clearance from the finished ceiling height to the provided roof deck or dust cover.

TYPE OF CLEANROOM

Do you need a recirculating or once-thru cleanroom?

ROOF DECK LOAD CAPACITY

If no load is specified, Starrco will include a corrugated roof deck with necessary steel support structure rated for maintenance load.

ROOM CONFIGURATION

A sketch must be provided for quoting accuracy. Your sketch should include:

- all intersecting walls
- any existing interfacing walls
- room designations
- door types and locations
- door swings
- window locations
- framed openings for conveyors or product pass thru
- return air chase sizes and locations if a recirculating type cleanroom

 LEVEL OF DESIRED CLEANLINESS

Generally between ISO-5/Class 100 and ISO 8/Class 100,000.

 ENVIRONMENTAL CONDITIONS

What are the desired environmental conditions for this cleanroom?

- Desired room temperature
- Relative Humidity (RH) set points
- Temperature and RH tolerances

If environmental conditions are not critical, Starrco will assume Creature Comfort Conditioning is desired.

 PROCESS WITHIN THE CLEANROOM SPACE

What processes will take place within the cleanroom enclosure?

 DESIRED WALL COVERING

The standard cleanroom wall surface is vinyl laminated to Class A gypsum substrate, but if you'd like added durability or when sanitary conditions warrant, we suggest adding Smooth FRP or Smooth-Painted Aluminum.



ELECTRICAL

Do you need field wired devices or a Modular Quick Tric package?

 CEILING GRID SYSTEM

Snap together 1-1/2" factory gasketed wire hung cleanroom grid (ISO-7, 8 & 9)

OR

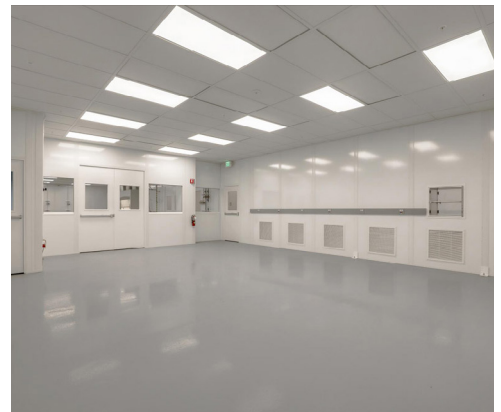
2" heavy duty factory gasketed anodized aluminum grid with 3/8" threaded rod support (ISO-5 & 6)

 SCOPE OF WORK

How much of your project would you like Starrco and their partners to handle, and what is your estimated timeframe for construction?

Let Starrco handle your next cleanroom project

With all of this information in hand, our team can quickly put together a proposal that reflects your application and your unique requirements for your new cleanroom or controlled environment. We're looking forward to working with you!



11700 Fairgrove Industrial Blvd
Maryland Heights, MO 63043

(800) 345-4259

starrco.com

Feel free to use the graph paper below to sketch out the size and layout of your next cleanroom project!

